

Pb Free Thermal Cutoffs

ELCUT 12 Series



The photo of 12J is shown.

FEATURES

- The environment-friendly products do not contain cadmium and lead.

IMPORTANT NOTICE

Read Standard Specification and Instruction Manual for use thoroughly.

TERMS

- Rated Functioning Temperature (Tf)**
The acceptable tolerance is +0, -10°C except PSE. The one for PSE is ±7°C.

- Holding Temperature (C-UL & CSA: Th, CCC: Tc)**
The highest temperature of the thermal cutoff at which it will not open the circuit for 168 hours while passing rated current. (Applicable to CSA, C-UL and CCC)

- Maximum Temperature Limit (Tm)**
The highest temperature at which continuity does not occur for 10 minutes after the fusing off of the thermal cutoff.

Ratings

Type No.	Rated Functioning Temperature Tf(°C)	Cut-off Temperature (°C)	Th (°C)	Tc (°C)	Max. Use Temp.*2 (°C)	Tm (°C)	Electrical Rating		UL	C-UL (CSA) *1	VDE	CCC	PSE
							Ampere (A)	Voltage (V)					
12G	65	62±3	49	42	200	1.5	AC250						
12Y	76	72±3	57	52	200	2	AC250						
12E	108	104±3	88	82	200	2	AC250						
122	115	112±3	89	89	200	2	AC250			*1			
12X	133	129±3	116	92	200	2	AC250						
			110	87		3.5	AC125				-		
			110	87		3.5	DC50				-	-	
12M	139	135±3	122	117	200	1.5	AC250						
			67	60		7	DC50				-	-	
12J	145	141±3	125	115	200	2	AC250						

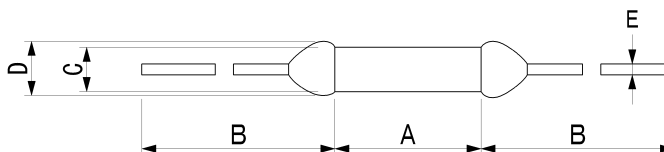
UL,C-UL:E50082, CSA: LR40743, VDE:923000-1171-0012

*1: Certified by CSA *2: Maximum allowable normal use temperature

Cut-off temperature is measured with silicone oil bath of which temperature is increased at the rate of 1°C /min. Detecting current is 0.1A or less.

Th and Tc are for C-UL(CSA) and CCC respectively.

Dimensions



Dimensions (mm)					
Lead length	A	B	C	D	E
Regular	9.0±0.5	38±3	2.5±0.1	3.0 or below	0.60±0.05
Long		68±3			

Uchihashi Estec Co.,Ltd.

Headquarters/Overseas Sales Section

9-14, Imazu-Kita 2-chome, Tsurumi-ku, Osaka 538-0041 Japan

TEL (06)6962-6666(INT-81-6-6962-6666)

FAX (06)6962-6668(INT-81-6-6962-6668)

<http://www.uchihashi.co.jp/english/>